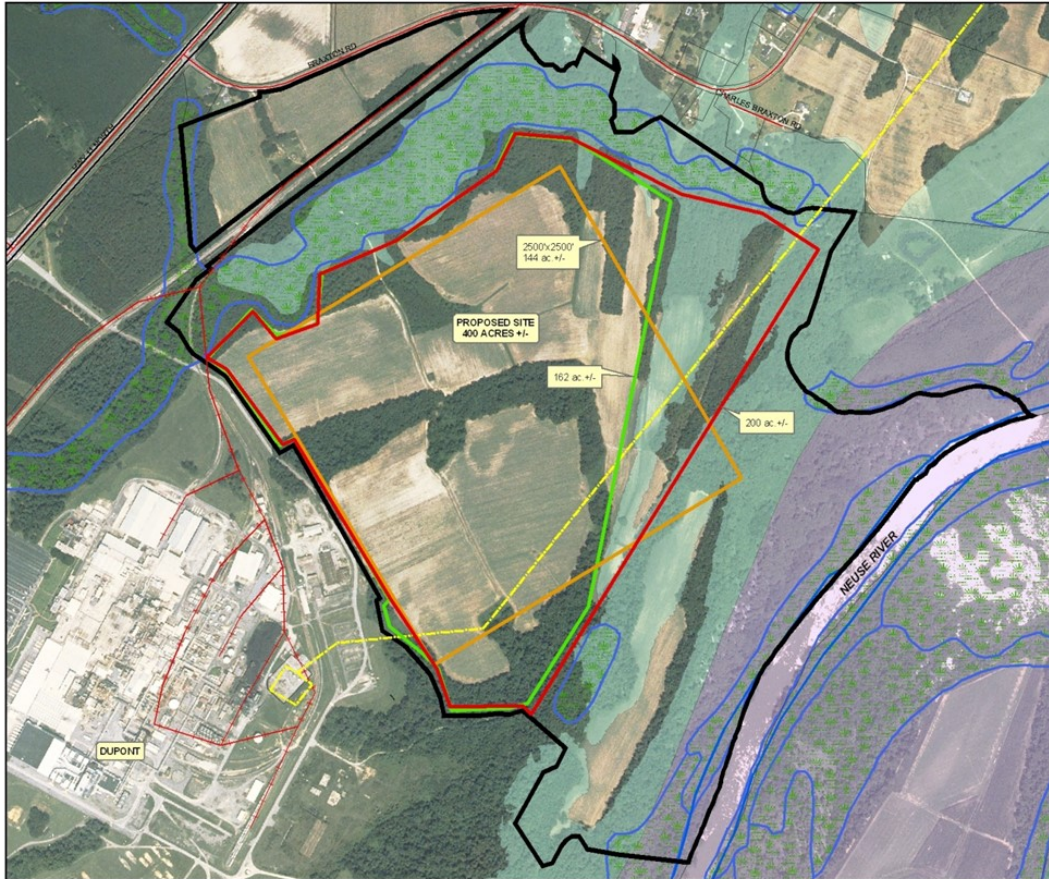


## Hwy 11 North Site



**Legend**

- major roads
- Railroad
- ▭ Proposed Ind. Site
- elec\_lines\_100kv
- ▭ NationalWetlandsInventory

**floodplain '03**  
**FLOODZONE**

- ▭ AE
- ▭ AEFW

NOTE: 2006 AERIAL IMAGERY

**PROPOSED INDUSTRIAL SITE  
HWY 11 NORTH**

0 300 600 1,200 1,800  
Feet  
LENOIR COUNTY ECONOMIC DEVELOPMENT COMMISSION  
DECEMBER 2011

### LOCATION

LOCATION: 4357 Braxton Rd.  
Grifton, NC

COUNTY: Lenoir

### DESCRIPTION

ACRES: 400.00

### ECONOMIC DEVELOPMENT CONTACT

Keely Koonce, Interim Director  
kkoonce@lenoiredc.com  
101 N. Queen Street | PO Box 897  
Kinston, NC 28501  
(252) 527-1963