

**Mountain Air Cargo Office Space**  
2340 John Mewborne Road  
Kinston, NC 28504

**Vacant Office Space – 5,800 SF**

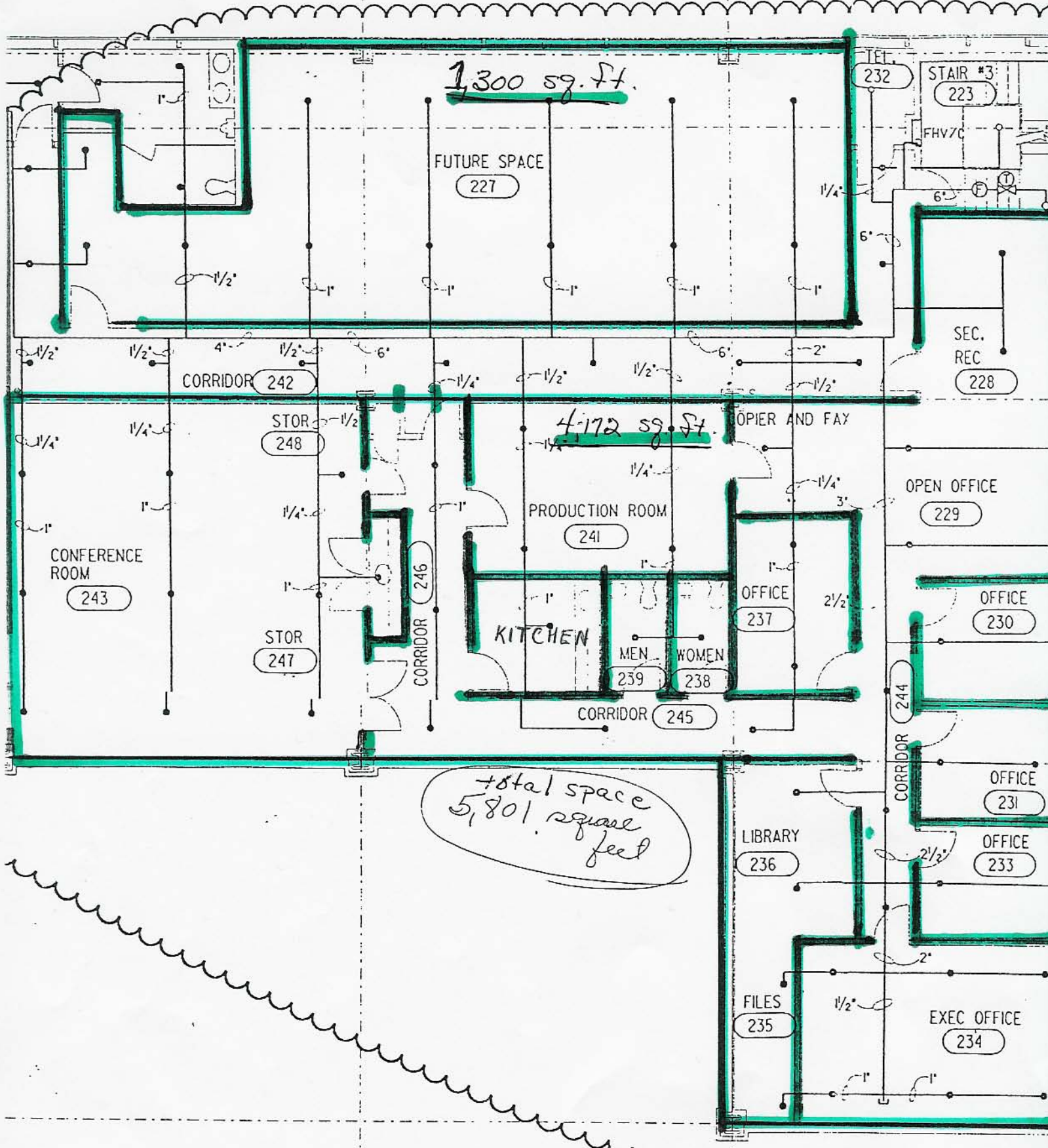
- Two bathrooms
- Kitchen
- Secretary-Reception area
- Production room
- Conference room with wet bar
- Library
- One Executive office
- Four regular offices
- Various interior storage areas
- Storage space available on third floor
- Front door elevator and stair entrance
- Side door emergency stair entrance
- All the above space is supplied with heating, ventilation and air conditioning
- All the above space has sprinkler and fire prevention system

**Wired for:**

- Local Area Network (LAN)
- High-speed internet access (T1+)
- Monitored Intrusion detection system
- Secured off-site data storage
- Web hosting
- Other needs as required

**Electrical and water are co-shared with MAC pro-rated on a square-foot basis.**

**200 community parking spaces – exclusive parking spaces can be designated.**



NOTE:  
 SPRINKLER HEAD LOCATIONS, PIPING AND SIZES  
 ARE DIAGRAMMATIC ONLY. EXACT LAYOUT SHALL  
 BE COORDINATED WITH MECHANICAL, ELECTRICAL  
 AND STRUCTURAL TRADES PRIOR TO INSTALLA-  
 TION. ALL SIZES SHALL BE CONFIRMED WITH  
 HYDRAULIC CALCULATIONS OF THE COMPLETE  
 SYSTEM. SEE SPECIFICATIONS FOR ADDITIONAL  
 INFORMATION.